

Words TRUDY ORAM
Pictures NICK CLAYTON

Light, bright and warm

Oakford Homes' Banksia design is a spacious, light home with a good layout that families with children will appreciate

As soon as daylight savings ends and the weather starts to cool, there's a point when I always notice how dark my home has become. Even though it feels like we're barely out of summer some days, the time change and a few overcast days makes a big difference inside my home. So it's around this time of year I like to visit display homes and see how light new homes can be, especially when the weather isn't so kind. Visiting new displays in autumn, you realistically get a feel of how light and bright a home will be throughout the year.

One home I've come across that ticks the "light and bright" box is Oakford Homes' Banksia. Like the elegant, bright native flowers this home is named after, the four-bedroom, two-bathroom family home has a good structure, with 2.7m ceilings as displayed, and takes into account the natural light with wide or tall windows in every space. Some rooms such as the open plan living area enjoy a dual aspect. At 269.39sqm, this is a spacious mid-size home that Oakford Homes sales consultant Raf Dona says will suit the larger size blocks that are currently on the market in areas such as Virginia or Mt Barker.

"A 600sqm block will be perfect for this home," Raf says. "The display home's block is 19m wide x 33m deep, but the Banksia can sit on a block as little as 17m wide by building the garage on the boundary."

"The land is larger at Virginia so a larger style family home is what most of the potential buyers are looking for."

"This design will suit either a young couple who are planning a future family or couples with children or even the older couple who need space for visiting grandchildren."

Families with two or three children who are looking for extra space indoors and outdoors will find the Banksia offers both in good proportions and there's a nice connection between the two thanks to the wide windows and sliding doors. The home has a warm soft glow throughout, with sheer curtains and plantation shutters diffusing the light.

"This home has a modern style with plenty of cross ventilation, large windows and sliding doors and easy family living with a good flow from zone to zone," Raf says.

"It's an easy home to get around with the ability to give occupants peaceful retreat areas when required."

"It also has great storage with the walk-in cloak cupboard and separate walk-in pantry, and a huge walk-in robe to the master bedroom with a spacious ensuite and double vanity."

With two separate but open living areas, plus an undercover alfresco, there's a good choice of places to chill out, while the hub of all entertaining will centre around the modern

kitchen, complete with island bench/breakfast bar and a large walk-in pantry tucked discreetly behind it.

The display home's kitchen is dressed in white and timber laminate finishes, with a white tiled splashback and it's a contemporary, lasting style that will look good for years to come. The reflective white picks up the light while the timber finish on upper cupboards adds an elegant focal point to the space. The soft grey neutral tiles on the floor also adds a nice depth to the open plan space.

"This home is designed with the central kitchen being the heart of the home, allowing the cook to still be a part of the family while preparing or cooking," Raf says.

"The kitchen overlooks the family living area and the huge meals space; the children's zone is separate and away from the parents' end, giving both parents and children their own spaces." For Raf the open plan area is his favourite part of the Banksia – the kitchen, walk-in pantry, family, dining and adjacent alfresco.

"This area has large windows so is very light and bright with great views to the gardens and would be ideal if you have views," he says.

Good storage is another big component of this design with a walk-in cloak/storeroom off the hall on the other side of the WIP, built-in wardrobes in all minor bedrooms and a huge double sided his-and-hers walk through robe in the master bedroom leading to its ensuite.

One of the highlights of the Banksia is the master suite, which is always a good selling point, and here it is dressed to impress.

From the mossy grey-green walls, white plantation shutters on windows for privacy and filtered light through to the walk-through robe and ensuite (with double vanity and wide sheer recess), it's a tranquil part of the home that feels secluded from the rest of the spaces.

The three-way main bathroom (powder, bath/shower, toilet) reflects the ensuite's style, and next to it the laundry is a smart area that maximises the space well with storage and has ample room for appliances.

As well as a double garage as standard, which has both an internal door and a rear roller door for access to the back yard, which is always handy, the Banksia has a large corner alfresco and a front portico as outdoor shelter spaces.

The Banksia also offers the flexibility to change things up to suit the rest of the family. If you need four bedrooms you can have them, but if three is enough you can turn the extra room into a child's study or your office if you work from home.

"This home is in our usual high quality Oakford Homes specification with only a few minor extras, as we wanted to show the quality we offer at no extra cost above our standard price," Raf says.



“It’s an easy home to get around”



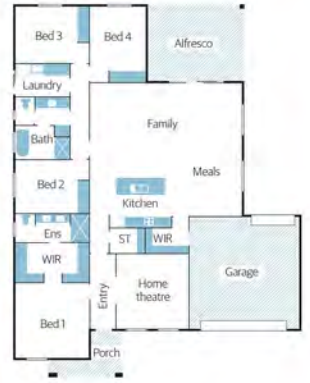
“We wanted to show the quality we offer at no extra cost above our standard price.”

The quality is obvious from the street with Littlehampton's Coachhouse bricks adding a dash of old world charm and rendered pillars, plantation shutters and Colobond trims adding a modern twist to the facade. If you went to look at a display home in summer and are still deciding on which design to build, take my advice and go take another look at it now, perhaps on a cloudy day, and see if it still fits your brief. You might find the Banksia does just that.



On display | Oakford Homes Banksia | 5

Home view



Off the plan
Builder Oakford Homes
Design Banksia
Price Base price from \$178,750, as displayed from \$220,935
Location On display at Juniper Boulevard (enter off Sheehey Rd), Virginia
Open Sat | Sun | Wed, 1pm-4pm
Contact Raf Dona, 0402 132 400, oakfordhomes.com.au
Details 269.39 sqm total size | 200sqm living area | 16.07m width | 20.57m depth | 4 bedrooms | 2 bathrooms | 2 living rooms | double garage/carport | alfresco | 2.7m ceilings

Features you'll love

Value for money: With a base price of only \$178,750 the mid-size Banksia represents great value for money when you look at the floorplan and total size. The design is also suited to a larger block so this really is a design that considers how families with young children want to live and how much space they need.

Storage solutions: I love good storage, especially when there's several walk-in rooms where you can really keep a lot of stuff. For hoarders, such as myself, this is a huge plus!

Serene feel: Walk through the Banksia and one thing you notice is how serene and calming it feels. The colour palette has an influence, but it's also the other interior details such as shutters and sheer curtains that diffuse the light and make it feel tranquil.

Get the look

Floor style
 The Belga Taupe (79937) tiles are a fabulous neutral tone that will match a range of decor styles. Beaumont Tiles. beaumont-tiles.com.au

Chef central
 Formica White Finestone features on benchtops with Formica Warm White floor units and Cinnamon Ash as a standout on overhead cabinets. Built by Aldon Cabinetmakers. aldoncabinetmakers.com.au

Polished finish
 We love glass elements and these pendants over the island bench add a warm glow and reflect the light. Beacon Lighting. beaconlighting.com.au

Going green
 Adding nice depth to the master suite is Solver's Tuz Lake paint colour, a mossy green grey, on walls. solver.com.au

Nice touch
 Plantation shutters add elegance to any room. These by Décor By Design.

Soak it up
 The bath is the Caroma Maxton, a standard option in Oakford Homes, from Routleys Plumbing, Malvern, 8291 3000, routleysonline.com.au, caroma.com.au

