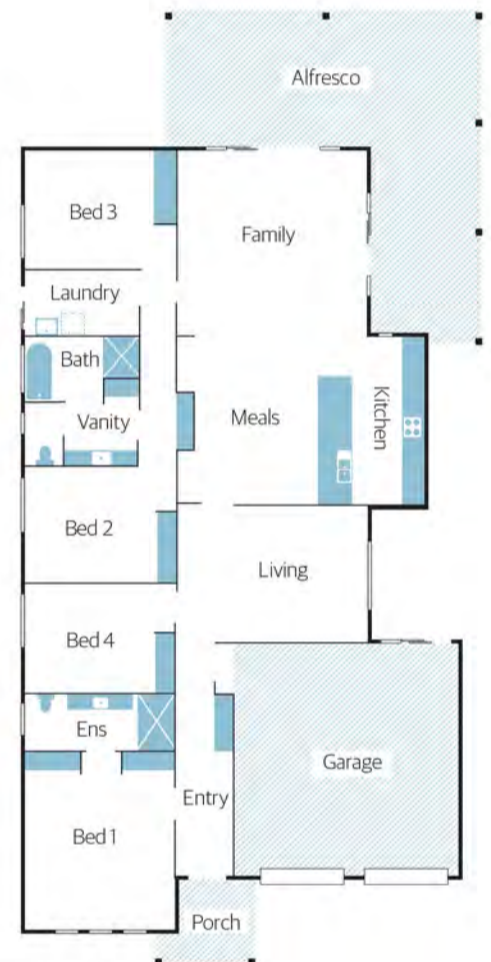


Pictures NICK CLAYTON
Words TRUDY ORAM

“Secure garage parking for two cars is always a bonus”



Home view



Outdoor living is the 'in' thing now

Whether you're after low-maintenance living, a home that optimises space or one with leisurely indoor and outdoor living areas, the four-bedroom Hazelbrooke Alfresco by Oakford Homes offers it all – and it fits on a courtyard block

A family home design for a courtyard block is the new achievable dream, and as such it's one of the most popular types of homes builders are developing as block sizes get smaller and newer areas gain in popularity.

Finding the balance between a good amount of living space for families to spread out in while dealing with tighter blocks is, however, the challenge.

The four-bedroom, two-bathroom Hazelbrooke Alfresco design by Oakford Homes, which is on display at Hallett Cove, showcases a home that achieves both. With a choice of three living zones that don't scrimp on space, and also a decent outdoor area (optional upgrade) that wraps around the living and kitchen in an L-shape (5.4m x 3.4m on one side and 2.88 x 8.63m on the other), there is a pleasant, low-maintenance feel, while still giving you space in which to garden or set up the swing set.

What's great about this alfresco design is

you can have several sitting areas and, in winter, follow the sun around when you need a dose of vitamin D.

A modern galley-style kitchen has a view to one side of the alfresco, and has been recessed to maximise the adjacent dining area. High-gloss finishes maintain the contemporary, fresh feel and to offer convenience, the oven, fridge and double sink are set in a three-way triangle.

Adding value to the home are the details which keep it streamlined, such as niches with display shelving off the dining area, the integrated linen cupboard in the second hallway and also the cloak cupboard off the entrance hall.

The Hazelbrooke Alfresco offers two separate lounge rooms – both with generous proportions without seeming cavernous – and each has the potential for outdoor access to a garden space, which is always advantageous on smaller blocks.

Elegant treatments have been included in the display, such as a trio of slim, long

windows in the front bedroom, the cream rendered facade and timber slat detail above the welcoming portico, and the high ceiling in the alfresco, which also features square-set rendered columns, maintaining the home's flow and balance from front to back.

The entrance hall has been widened to 1.48m and this is a design feature you'll appreciate when arriving home or when welcoming guests.

Secure garage parking for two cars is always a bonus on a courtyard block, and in the Hazelbrooke Alfresco you'll find there are also practical features of an internal door from the garage, as well as a rear sliding door to access the backyard.

Four bedrooms are positioned down one side of the floorplan, as is the three-way main bathroom and laundry, and would be ideal on a south-facing or west-facing side of the home. Wardrobes come as standard in all bedrooms, while the master bedroom offers two sets of built-in robes, which hide the long, stylish ensuite behind it.

Off the plan

Builder Oakford Homes

Design Hazelbrooke Alfresco

Price From \$157,700 (with standard inclusions, no alfresco); from \$174,885 (with standard inclusions, including alfresco); from \$263,635 as displayed

Open Sat | Sun, 1.30pm-4pm

Location Cnr Brooklyn Drive and Erebus Glen, Hallett Cove

Contact Eileen Williams 0414 835 429, oakfordhomes.com.au

Details 252.19sqm total size | 167.33sqm living area | 12.3m width | 24.7m depth | 2.7m ceilings | 4 bedrooms | 2 bathrooms | double garage

Features you will love

Three zones: Doors can close off the home's different zones, which means you can also be selective with your heating or cooling needs. There's a door to the secondary hall and another closing off the open-plan area from the front part of the home.

Quiet time: The position of bedroom four near the middle lounge means it could also be ideal as a home office or a quiet study – or even used as a guest bedroom.

Biparting sliding doors: Similar to bifolds, these sliders really do open up living areas to outdoor spaces, and the Hazelbrooke has two sets off the main living area for an easy flow of traffic when entertaining.