



My Place
AT HOME WITH
SURF LIFESAVING SA'S
CLARE HARRIS

Focus
OPEN UP YOUR HOUSE WITH
SERVERY WINDOWS

Neale Whitaker
FOUR-LEGGED FRIENDS ARE
THE TRUE HEART OF MANY
HOMES

Wishlist
JOIN THE
GENTLEMEN
CLUB

HOME design

Words TRUDY ORAM
Pictures NICK CLAYTON

You can unwind in this Oasis

You can choose your own adventure in this split-level home, but one thing is for sure, Oakford Homes' Oasis is a home you'll want to relax and entertain in

When I visit a new display home, I love it when I don't even get past the front door and I find something I like. This time it was the terrazzo-look feature tile on the facade of Oakford Homes' new Oasis design and straight off I had to touch it. Smooth with flecks of black within the grey masonry-like veneer tiles (see Get the Look for details), they make a stunning start to this home. When paired with the sharp rendered lines, large windows and a low pitch roofline, it's a very contemporary and sleek looking home. And a polished home facade is what you want when you are in an environment such as this, at Craighurn Farm's exclusive Blackwood Park estate.

The Oasis, a four-bedroom, two-bathroom two-living home, is set on a sloping corner block overlooking a hillside filled with gum trees. It's a very pleasant outlook as you look out from the master bedroom's front window.

As a whole, you'll find this home design is a very tranquil one and whether that's because of the layout, the colour scheme or the interior selections, it certainly lives up to its name.

It almost feels ritualistic like a day spa, with its soothing moss green and grey tones on walls, ship-lap timber panelling as a feature, soft carpet in bedrooms and wide floating floorboards in a beautiful whitewashed oak look, in this case Terra Mater's LamWood in Sedale Grey colour.

This true wood laminate flooring is impressive and passes my sound test – none of the hollow, creaky sounds, but instead it's solid and quiet underfoot. The light colour is a good choice too as it makes this home feel serene and relaxing.

"The interior style is inspired by Australian coastal holiday homes found in areas such as Byron Bay and Noosa on the east coast of Australia," Oakford Homes' sales consultant Kimberly Potter says.

"We wanted to bring a relaxed and airy feel so you could come back to home and unwind in an Oasis."

Go through to the rear-facing living zone and its raked ceiling and high windows take this tranquil feel a step further. A casual and relaxing space, diffused light floats in via the outdoor zone, which also has a raked ceiling – an impressive look that I haven't seen in an alfresco. And you can tell this space will be fabulous for entertaining.

"The standout feature has to be the striking raked ceiling with light filled clerestory windows," Kimberly says.

"Lifting the ceiling like that creates a whole different dynamic to the design and fosters a perception of space."

"The standard ceiling height is 2.7m however as our display is a split level adaptation, it showcases

**The key is
luxury and
spaciousness**

2.7m, 2.9m and 3.2m ceiling heights throughout the home."

Adjacent the main living, the dining area sits in a niche with a lowered ceiling (still 2.7m) which gives it a stylish degree of formality while around the corner you'll find the home theatre lounge with its dark walls and cosy atmosphere. Shut it off when you want to watch a movie and it will be a snug space to curl up on the couch.

Back in the main living, while the focus is most definitely on the 3.2m raked ceiling and the clerestory windows, the galley kitchen with its long island is also a defining feature and pristine in whites and off-white stone. The Timeless Calacatta Polished sheet used on the splashback looks divine, while Essastone's Ash Concrete engineered stone on benchtops is one of those tactile finishes that you have to run your hand across. It's not a polished finish but a smooth matt one and it feels remarkably different to the usual surfaces.

Behind the kitchen, there's a walk-in pantry with a heap of shelving and a second sink at the far end for good measure.

The pantry is a clever part of the Oasis's design as it essentially divides the back part of the home from the front, including the entry. In fact for those who like a formal entrance, this one will do nicely with art works in niches and its 2.9m ceiling making it feel elegant.

"The entrance is immediately intriguing, not just a hall, but defined in its own space by a central focal point, a feature relevant to the home and family area that draws you in," Kimberly says. "The dividing passage invokes a choice – left or right."

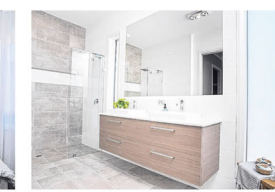
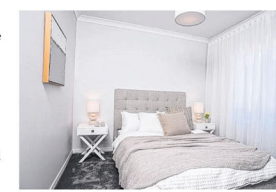
The Oasis has been designed to work with sloping blocks and as you step up there's a choice of two directions to follow, which I can imagine children will love as they get to choose their own adventure.

Go one way and you'll find the laundry, a hallway linen cupboard and a secondary hall leading to two minor bedrooms and the stylishly appointed main bathroom.

Go the other way and find a separate study – well placed for quiet time, but which equally could be a guest bedroom – before you reach the dining and kitchen spaces.

I can't help but like this study, both in its interior selections and its placement within this design as it will be a very functional multipurpose space. Wide tall windows also make a huge difference to how this and other rooms feel.

I have saved another of this home's best features for last. The master suite is large and well dressed, as all bedrooms are, but this one comes with extras that delight. The walk-in robe is far more than it sounds – this is a walk-in dressing room, with hanging space and drawers on two



The Oasis ticks so many 'must-haves' off the list – four bedrooms, home theatre, huge ensuite and walk-in robe, open plan living, walk in pantry, alfresco – and it can fit it all on a courtyard sized block

sides, a central mirror and an ottoman in the middle so you can sit down as you put your shoes or jewellery on.

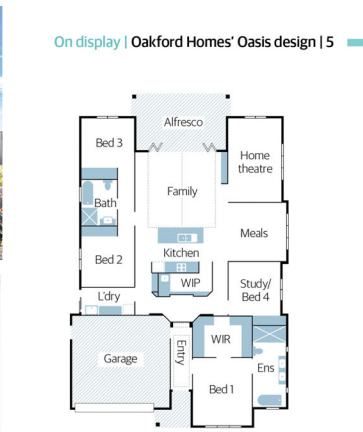
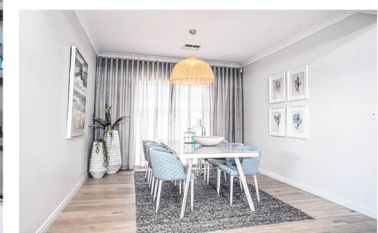
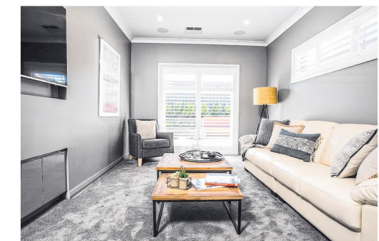
The long ensuite invokes a day-spa with soothing tones, a double shower at one end and a freestanding bath at the other. Plantation shutters, soft grey and timber elements add the finishing touches to this blissful environment.

"We listen to what our clients and the market is telling us and the key is luxury and spaciousness" Kimberly says.

"If you're going to build your dream home, why not have it all? We think an ensuite of generous proportions with a frameless glass double shower, freestanding bath, quality fixtures and fittings and a vast walk in robe providing ample storage solutions ticks these boxes.

"The Oasis ticks so many 'must-haves' off the list – four bedrooms, home theatre, huge ensuite and walk-in robe, open plan living, walk-in pantry, alfresco - and it can fit it all on a courtyard sized block."

Oh, the choices you can have these days, but they are all rather good, aren't they?



Homeview

Off the plan

Builder Oakford Homes
Design Oasis
Price From \$320,925 (as displayed)
Location On display at Lot 569 Fergusson Ave, Blackwood Park estate, Craighurn Farm
Open Sat | Sun | Wed, 1pm-4pm
Contact Kimberly Potter, 0410 341 694, oakfordhomes.com.au

Details
269.81sqm total size | 206.66sqm living area | 13.97m width 18.95m depth | 3 bedrooms plus study | 2 bathrooms | 2 living rooms | double garage/carport | 2.70m/2.90m/3.20m ceilings

Features you'll love

The flooring: When it comes to floating floorboards, these are pretty good in terms of their look, sound and fit. The colour is light and Scandi-inspired, and they give the home a real sense of tranquility.

Division of spaces: There's a unique feel about the Oasis, where each area has its own sense of space while still being connected. The dining area feels semi-formal with its own niche and lowered ceiling, while tucked around the corner the home theatre is cosy and snug, but still nice and bright. The central main living and kitchen is relaxed and casual with that impressive raked ceiling and windows.

Two-way hallway: I can't help but think children will love the two ways to reach the kitchen. This divider is a clever way to give the home that extra feeling of space, while also allowing room for storage as well.

Get the look

Base points

The laminate floating floorboards are wide and have a lovely light appearance. These are Terra Mater's LamWood in Sedale Grey. In bedrooms and the home theatre, the dark, soft carpet is Dream Shadows in colour 94 Wayward. Both are from McLeays.

On the outside

This is my new favourite feature tile and its Austral Masonry's GB Honed Blocks in colour Nickel. Love, love, love! It is matched with a render finish in Silver Paints' Southwards colour. While in the alfresco, the dark brick is Austral Bricks' Muscat Grey.

White on white

Pristine and fresh, the kitchen features Formica's Snowdrift gloss on cupboards and drawers, 20mm Essastone Ash Concrete in a pencil edge on benchtops, and the Timeless Calacatta Porcelain sheet, supplied by Beaumont Tiles. The kitchen was built by Aldon Cabinetmakers.

Tall order

A striking start, the large timber and glass panel front door is Hume Doors' Savoy 1200 XS24 (SPM) and painted in Colorbond's Wallaby.

Timber work

The built-in bookcase/shelves in the living is an impressive feature. The three 50mm floating shelves are finished in Laminex's Jericho Natural finish, and the raw Matchboard backing behind shelves is painted in Taubmans' Castle Grey.

Take a dip

The bath is a divine finish to the master retreat, and this is Caroma's Aura 1600 freestanding bath, with a bath mixer tap completing the look, both from Routleys at Malvern.

