

HOME & life

SA's GUIDE TO THE LATEST IN NEW HOME DESIGNS

flip over
To see all the winners
AT THE 2017 HIA-CSR SOUTH AUSTRALIAN
HOUSING AND KITCHEN & BATHROOM AWARDS

Donna Hay
HOW TO MAKE
TARTE TATIN

Sophie Thomson
PLAN YOUR WATERWISE
GARDEN NOW

Wishlist
ADD
WARMTH
WITH
TIMBER

IT TAKES TWO
A DOUBLE-STOREY DESIGN BY
OAKFORD HOMES HAS EVERYTHING
THE MODERN FAMILY NEEDS

THE SUNDAY MAIL'S FASTEST-GROWING SECTION
229,000 PEOPLE READ **HOME & life** THAT'S 20% MORE THAN THIS TIME LAST YEAR*
*EMMA (Enhanced Media Metrics Association) June 2017

HOME design

Words ABBY MOULTON
Pictures NICK CLAYTON

New heights of luxury

Let The Luxe by Oakford Homes elevate your standard of living, with its palatial proportions. Two balconies off the master suite are just the start of its high-end features

When it comes to Oakford Homes' Luxe design, two words spring to mind: pure opulence. A wine cellar, home theatre, multiple living areas, a resort-style ensuite and a modern design capturing light and space create this luxurious four-bedroom custom home.

Syon's Matrix cladding on architectural columns, a double door entry and composite timber front deck are an inviting contemporary start to the home.

Enter and you are greeted by a wide, open hall and a lovely warmth (ducted heating), which on this blustery cold day was very welcome. The 2.7m ceilings to the lower level let light fill the home, while the clever layout allows for a flowing design, with several spacious living areas, the first of which is a large formal lounge area. It's a quiet retreat space, separated at the front of the home, with ever-so-soft carpet underfoot. Down the hall you'll find the large, long home theatre, with dark walls to put you into movie mode as soon as you walk in.

Oakford Homes' marketing co-ordinator, Natalie Marchesan, says the new two-storey design, which is on display at Lightsview, has ample room for everyone.

The house has been designed to fit on a 400sqm block, about 14.5m x 27.5m, however, it can be tailored to suit varying block sizes.

"It has well-proportioned rooms with three separate living areas, a beautiful home theatre, large alfresco, a decadent ensuite to the master bedroom and an additional balcony to the front," Natalie says.

An example of a great use of space is the under-stair wine cellar, which is set to a cooler temperature. With a glass panel door and mood lighting, it also contributes to the interior style and elegant feeling of the home.

Continuing down the hallway, past a stylish powder room and a fabulous laundry with its own courtyard, is the generous open-plan family, meals

and kitchen area, all looking out to a huge alfresco. The Luxe will be perfect for entertaining, with a contemporary kitchen featuring plenty of overhead and full-length cupboards and a wide island bench with shelving, integrated appliances and a good vantage over both the meals and living areas.

"Open-plan kitchens are great when entertaining and help bring the family together," Natalie says. "They provide the opportunity for interaction with guests and family during meal preparation."

Dark cabinetry brings warmth to the vast space and the large surrounding windows and sliding doors mean the space is light and bright.

Slide open the double sets of glass sliding doors in the family and dining areas to step out to the alfresco and it immediately extends your living space. All under the main roof and also showcasing a feature brick privacy wall, it's ideal for year-round entertaining or just for having a casual family meal outside.

But it's on the upper level you will find a real treat. The hotel-inspired master suite takes up the full width of the upper level and offers a terrific wall-to-wall, walk-through robe hidden behind a partition wall framing the bed.

The master also has two balconies and an open ensuite as an extension of the suite.

One of the balconies has bifold doors, which open directly from the beautiful ensuite, where a freestanding bath is the centrepiece. It remains completely private thanks to timber screening, so you can enjoy a bath in the open air if you like.

Whether you are enjoying a soak as the sunlight streams in or having some quiet relaxation time at night, you'll definitely feel as if you're in a resort.

The master suite's front-facing balcony has been made private in part and has a glass balustrade. Three more bedrooms, all with similar dimensions, are lined up in a row on the upper level, away from the noise of daily life downstairs. I particularly like the black-framed built-in wardrobes, which offer a sleek, contemporary detail to these minor rooms. All three are linked to a retreat lounge where children can relax in their own space or entertain friends.

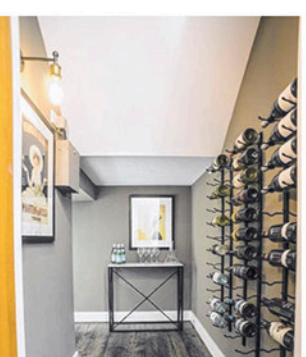
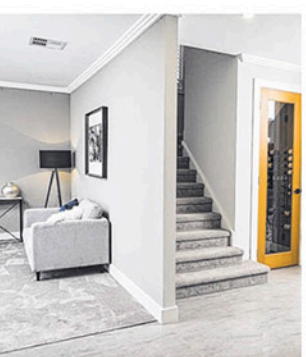
Servicing the minor bedrooms is a large family bathroom with a double vanity, central bath and double-length shower. Reinforcing the luxurious feel here is the 1.2m-high tiling to the bathroom and ensuite, and 2m-high tiling to the shower. It is an example of the high-quality standard inclusions Oakford Homes offers.

Adjacent is a handy storeroom/linen cupboard – an area dedicated to keeping the upper level clutter free. The Hebel flooring system between levels in lieu of structural flooring is another standard specification. It has superior acoustic performance as well as thermal insulation properties, keeping your house warmer in the winter and cooler in summer.

The home appeals on so many levels, from the generous spaces to the luxe finishes to the thoughtful and practical details. It's definitely one worth a look this weekend.



The master suite's second balcony is the perfect space to enjoy the morning paper and coffee



Get the look

Soak it up

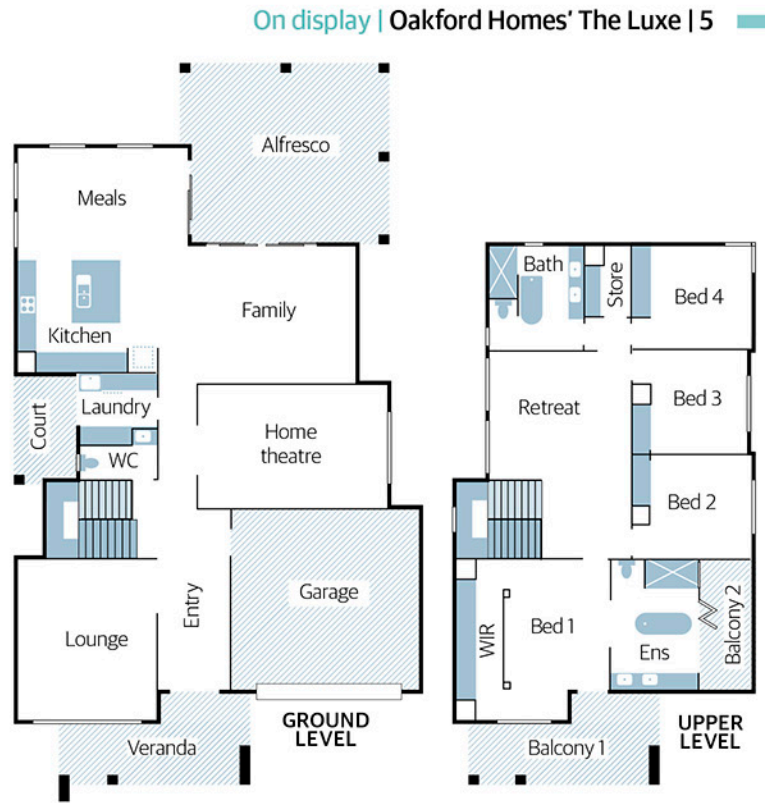
This deep, free-standing bath in white will add a sense of harmony to your bathroom. Positioned in the middle of the ensuite, this centrepiece makes a bold statement and an elegant focal point. Suttor 1690 BTW Free-standing Bath, supplied by Beaumont Tiles, beaumont-tiles.com.au

Dynamic design

The linear five-light pendant above the kitchen's island bench serves as a practical source of light. It has a clean, slimline profile which brings a luxurious touch to the kitchen. Its adaptable design has also seen it being used in the lounge room. Orion 15 Light pendant in Black/Smoke, supplied by Beacon Lighting, beaconlighting.com.au

Kitchen class

The pinnacle of luxury is stone surfaces, so Essastone is a natural choice for a sophisticated kitchen. It is remarkably durable and almost maintenance free, making it ideal for family homes. Featured here is 20mm pencil round Essastone, Ash Concrete (matt) supplied by Aldon Cabinetmakers, aldoncabinetmakers.com.au



Homeview

Off the plan

Builder Oakford Homes
Design The Luxe
Price From \$365,000
Location On display at Lightsview, Waterford Circuit
Open Sat | Sun | Wed, 1pm-4pm
Contact 8423 1032, oakfordhomes.com.au
Details 414.64sqm total size | 164.09sqm living area (lower level) | 136.22sqm living area (upper level) | 23.6m depth | 13.5m width | 2.7m (lower) 2.55m (upper) ceilings | 4 bedrooms | 2.5 bathrooms | 4 living areas | alfresco | balcony double garage



Features you'll love

Air it out: You will never have to worry about the clothes hanging on your line encroaching on your entertaining space again. The laundry opens to its own courtyard, the ideal spot to let clothes dry without being in the line of sight.

Perfect pantry: Do not underestimate the amount of kitchen storage a family home needs. Tall cupboards side-by-side make an impressive pantry. The timber finish of the doors complements the soft mocha tones of the kitchen.

Added convenience: Guests will appreciate the convenience of the downstairs powder room, tucked behind the staircase off the central hallway.

