

Sunday Mail

FEBRUARY 2, 2020



FOLLOW US ON
INSTAGRAM
@SMHOMEMAG

My
place

AT HOME
WITH JO
THOMAS

Classy kitchens

THREE OF THE BEST ON SHOW

Alfresco style

MAKE THE MOST OF THE GREAT OUTDOORS

Bushfire clean-up

STEERING CLEAR OF HAZARDS

ROYAL TREATMENT

PRINCETON TAKES FAMILY LIFE TO NEW HEIGHTS

HOME design

Words CHLOE METCALFE
Pictures NICK CLAYTON

Family life hits new heights

Step through the front door of Oakford Homes' Princeton design, and you'll immediately notice the spacious feel of a house that truly takes family living to another level

When I started visiting display homes, the overall spaciousness and interior were the most important features in my book. However, fast-forward a couple of years and it's all about the kitchen.

It's hard to say what sparked this transition – certainly not my own kitchen – but over the years I've come to realise how integral a good kitchen is to a family home.

This realisation was further highlighted when visiting Oakford Homes' four bedroom, two bathroom Princeton display at Mt Barker recently. The single storey design is suited to a traditional-sized allotment, sitting 15.29m wide and 23.15m deep, and offers 235.99sqm living area.

Oakford Homes sales consultant Roy Mather says the Princeton has been designed with family living in mind. "A fresh new design from Oakford Homes, this spacious family home comprises four bedrooms, three living spaces, a double garage and alfresco area," he says. "It truly is the perfect design for established and growing families alike and is based on Oakford Homes' traditional specifications with the addition of Marshall Thompson inclusions."

Usually when visiting a display home, I walk through room by room, but decided to change things up for the Princeton and head straight to the open-plan family, meals and kitchen zone.

Oakford Homes selections consultant Casey Wood says the kitchen has been designed to feel like the heart of the home.

"We have envisioned this space as an area for the family and entertaining, with a very long 3.9m island bench," he says. "This allows you to cook and prepare meals, while also having space at the end for friends or family to sit and enjoy being a part of this space."

The island benchtop has a divine satin finish and the dark, mirrored splashback gives that added sense of luxury. However, the layout will be the real standout for families. There's a lot of space dedicated here and you'll notice how large it feels if you visit it at the new Bluestone development.

As I opened cupboards and slid drawers, I noticed there was no room for a dishwasher – a key element in most family designs – but fear not, this is simply a clever design feature. Walk into the butler's pantry, which is packed with storage and a handy sink, and you'll find the dishwasher.

Just imagine entertaining friends and being able to load up the dishwasher, turn it on and close the door – meaning no background noise and no second thoughts.

Having fawned over the kitchen long enough, my attention turned back to the open-plan family and dining area. It's not hard to see there's been a keen attention to detail throughout this design,

but the clever storage niches and awning windows really amplify the functionality of this area.

Casey says opting for awning windows can be a more energy-efficient option as they seal better, meaning you can keep your house comfortable year-round. Furthermore, the design has cleverly enhanced the spacious feel of the family and dining area through the use of high curtain rails – creating a feeling of grandeur.

Sliding doors connect the rear of the design to a large alfresco area, perfect for all your entertaining needs and heightening the spaciousness of the home. Back inside, a secluded hallway near the kitchen leads through to the three minor bedrooms and a private retreat.

This feels cosy and welcoming, a great space to potentially turn into a rumpus room or movie theatre for the kids to enjoy. The bedrooms are nestled around this central space and all offer built-in robes and ample natural light, making them feel equally as welcoming.

However, the main feature that stood out in this area was the position of the laundry.

Usually, laundries are found off the hallway with the family bathroom, yet this one is near the three bedrooms – ensuring there's no excuse for messy piles of clothes. The family bathroom offers a shower, a vanity and a bath, with an attached powder room – the perfect layout for a busy morning schedule.

Now, I haven't forgotten the real treat of a family home – the master suite – but, as they say, it's nice to leave the best until last. The Princeton really amps up the "private haven" feel of the master suite by setting it slightly back from the hallway and using a small corridor to lead into the bedroom. "The master suite is located at the front of the home for privacy," Roy says. "It also features a grand ensuite with a freestanding bath tub, floor-to-ceiling tiling and a large shower with twin showerheads, plus plenty of storage."

At the front of the floorplan you will also find a cosy lounge room, which could easily become an office or additional retreat for parents to enjoy away from the kids.

Although the layout of the Princeton is the main standout, the interior will also impress. Taking inspiration from the neutral facade, with gorgeous accents of sandy stonework, the interior features a classic colour palette – allowing you to put your own flair on the design.

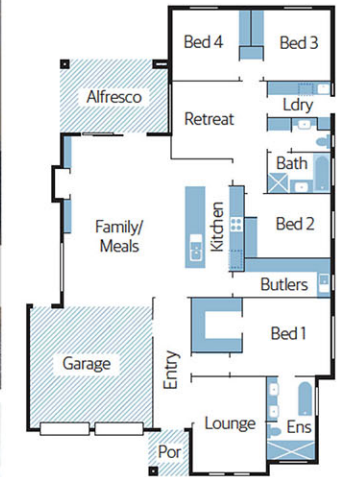
I've seen my fair share of family-friendly designs, however Oakford Homes' Princeton really sets a standard. From the moment you step through the front door, you will notice the spacious feel of the home and the attention to detail in every room – a design that truly takes family living to another level.



From the moment you step through the front door, you will notice the spacious feel of the home and the attention to detail in every room – a design that truly takes family living to another level



On display | Oakford Homes' Princeton | 5



Homeview

Off the plan

Builder Oakford Homes

Design Princeton

Price from \$315,875 (as displayed)

Location On display at Bluestone, Mount Barker (East Parkway)

Open Wed, Sat and Sun, 1pm to 4pm

Contact Scott Mather 0430 020 017 or Roy Mather 0409 119 211, oakfordhomes.com.au

Details 297.71sqm total size | 235.99sqm living areas | 15.29m width | 23.15m depth | 3m ceiling height | 4 bedrooms | 2 bathrooms | 3 living rooms | double garage

Features you'll love

Cooks' delight: The kitchen in the Princeton is nothing short of outstanding. The large island bench makes entertaining and food preparation a breeze, while the large butler's pantry – with a handy dishwasher – ensures you can keep dirty dishes away from plain sight.

Secluded retreat: Your kids can enjoy their own private wing, complete with a retreat for movies or games. Furthermore, the inclusion of the laundry nearby means there's no excuse for untidy bedrooms.

Grand master: The private master suite is slightly set back from the main corridor, making it feel secluded. The addition of a stylish ensuite, complete with a freestanding bath and double shower, is sure to impress.

Flexible design: Although the Princeton has been designed with functionality in mind, the design can easily be altered to better meet your allotment or your family's needs.

Attention to detail: For families that want that added attention to detail in their new home, the Princeton offers just that – from handy wall niches in the family room to awning windows that will improve your home's energy efficiency.

